

Checking control sites with MapRun6



Even for the best of navigators, it is possible to make an error when taping or putting out controls for an event. That's where it's handy to check by satellite that you are at the right place on the map, and that the map is accurate.

The latest version of MapRun has a "Check Sites" feature, which you can use to show your location on the orienteering map and (optionally) show your controls. MapRun6 is free and runs on both iPhones and Android.

Quick summary

To check your control sites with MapRun6 you will need:

- a KMZ file of your georeferenced map
- (and preferably also) a KML file of your control locations

You upload these at the [MapRun Console](#), receive a 6-digit PIN which keeps your files confidential, then download the event on your phone.

- You will be able to see exactly where you are in relation to the map when you are in the field.
- You will also have a record of your track for later use (under "Show Results").

Details

1. KMZ file

This will enable you to see where you are standing in the field in relation to the map. Ask your mapper to give you a KMZ file version of the Map. This is a standard export from OCAD.

2. KML file

This will enable you to see the control circles as well as the map. It is not essential to have this file but it's very helpful. You can use **Purple Pen** and **Google Earth Pro** (free software) to obtain a KML file. See explanation on page 2.

3. Upload to the MapRun Console

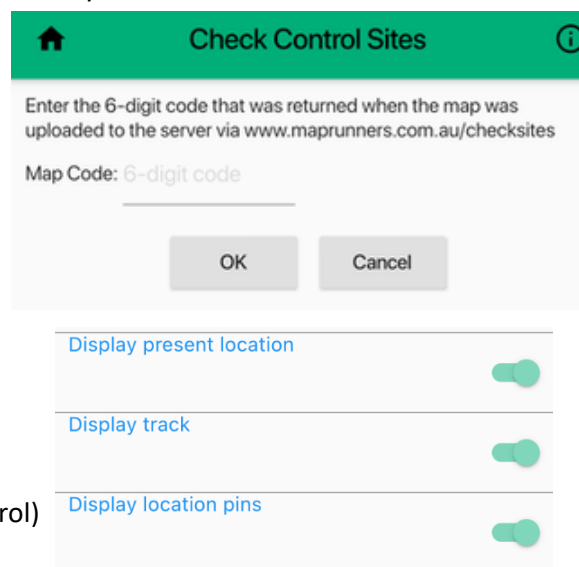
Visit https://console.maprun.net/#/check_sites_url and follow the instructions to upload the files. Note the 6-digit PIN. Only people with the PIN will be able to access your event.

4. Open the event on your phone

- Open MapRun6
- Tap the GREEN CIRCLE (bottom right of screen)
- Select Check Sites → enter the 6 digit PIN
- Now that you have opened the CheckSites event, you can find it again at any time among the "local events" stored on your phone.

5. Change the "Options & Settings" for your fieldwork:

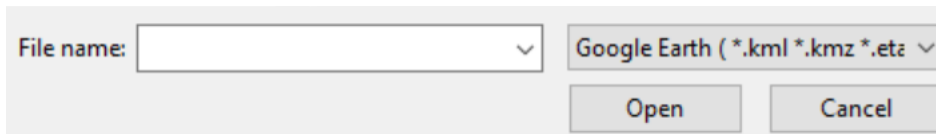
- Display present location → ON
- Display track → ON
- Display location pins → ON
- Start Anywhere (SAW) → ON (Optional – start at any control)



Creating a KML file from Purple Pen

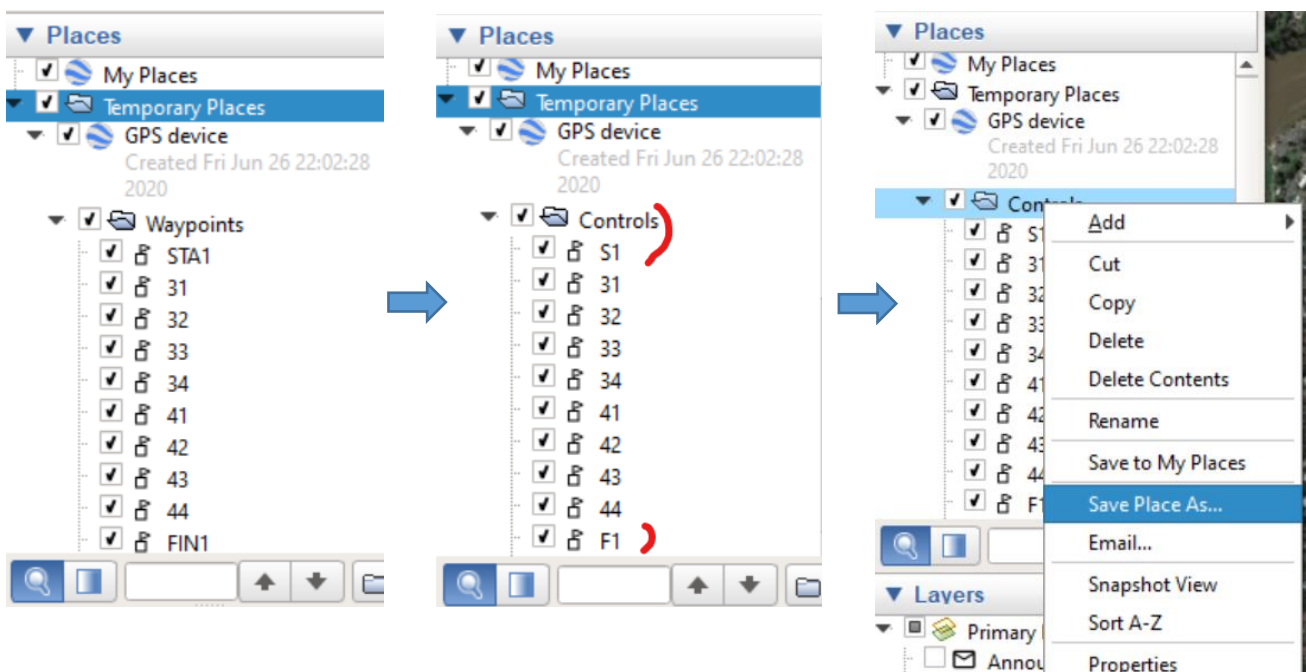
You can use **Purple Pen** and **Google Earth Pro** (free software) to obtain a KML file.

- When you create an event in Purple Pen, **use the georeferenced OCAD file as your map**.¹
- In the File menu, select “Create GPX file”.
 - Easiest is to create a GPX for “All Controls”. (Do not add a Name Prefix).
- Open **Google Earth Pro** → File → Open → Change the default file type from Google Earth to GPS, and open the GPX file you created from Purple Pen.



- Rename “Waypoints”, “STA1”, “FIN1” to → “Controls”, “S1”, “F1”
- Right-click on the Controls folder → Save Place As... → save as a KML (not KMZ) file.

When naming your event, add PXAS, e.g. “Queens Park test PXAS”. This allows you to visit the controls in any order.



¹ If you started out with a PDF or JPEG file as your map file, you will need to replace it with a georeferenced map. When you do this, it is likely that all controls will need to be relocated by the same distance. This can be done using the tool at https://console.maprun.net/#/purple_pen_url on the MapRun Console.